



INTERNATIONAL MASTER IN INDUSTRIAL MANAGEMENT



PROGRAMME INFORMATION

The IMIM programme is the result of a collaboration between Universidad Politécnica de Madrid (Madrid, Spain), Heriot-Watt University (Edinburgh, UK and Dubai, United Arab Emirates) and Technische Universität München (Munich, Germany).

The course provides managerial skills to students with a technical, particularly scientific or engineering background, focusing on business skills relevant for pursuing managerial careers in international manufacturing and service industries.

FIRST TERM

EDINBURGH, SCOTLAND

Projects and Operations in an Evolving Industrial Revolution (30 ECTS)



SECOND TERM

MADRID, SPAIN

Strategy, Resources and Data in and Increasingly Digital World (30 ECTS)



THIRD TERM

MUNICH, GERMANY

Entrepreneurship & Technology Management (30 ECTS)

MADRID, SPAIN

Industry 4.0: Technological Foundations and Organizational Challenges (30 ECTS)

DUBAI

Challenges for managing Logistics and Supply Chain in Global Business Environments (30 ECTS)



FOURTH TERM

ANYWHERE IN THE WORLD

Master Thesis: Company-based or University-based (30 ECTS)



The programme is conducted in a highly international environment with the possibility to spend the four semesters in 4 different countries. The programme experience goes beyond the classroom and students will also participate in language courses, seminars with managers / industry experts and company visits.

Emphasis is placed on topics of great relevance for technical university graduates, such as operations and supply chain management.

Integrative teaching approach aimed at developing the ability of students to tackle managerial issues in an interdisciplinary manner.

Students get first-hand experience by undertaking the University-Based or Company-Based Master Thesis in close collaboration with leading universities and companies in Europe.

DEGREES AWARDED

ITINERARY: HWU>UPM>TUM

- > Master of Science (MSc) in Industrial Management (International), from Heriot-Watt University (HWU) School of Social Sciences (SOSS)
- > International Master in Industrial Management from Universidad Politécnica de Madrid
- > Master of Science (MSc) in Management, from Technische Universität München

ITINERARY: HWU>UPM>UPM

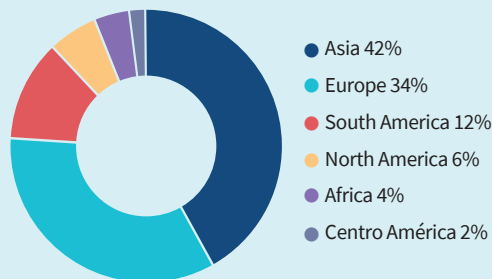
- > Master of Science (MSc) in Industrial Management (International), from Heriot-Watt University (HWU) School of Social Sciences (SOSS)
- > International Master in Industrial Management from Universidad Politécnica de Madrid

ITINERARY: HWU>UPM>HWU

- > Master of Science (MSc) in Industrial Management, from Heriot-Watt University (HWU) School of Social Sciences (SOSS)
- > International Master in Industrial Management from Universidad Politécnica de Madrid

IMIM GRADUATES COME FROM OVER 25 COUNTRIES

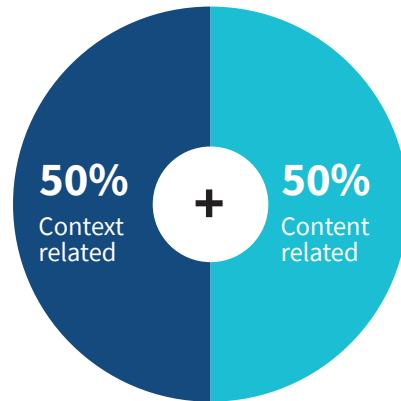
Spain, Colombia, Portugal, India, Panama, Germany, Italy, Sweden, Afghanistan, Ecuador, China, Argentina, Mexico, Paraguay, Turkey, Norway, Belgium, Brazil, Vietnam, Singapore, Costa Rica, Thailand, France, Ukraine, Jordan, Pakistan, Philippines, Iran, Kenya, Sudan, Ethiopia, South Africa, Bulgaria, Nepal, Bangladesh, Venezuela, Albania and Holanda.



LEARNING OBJECTIVES

Global competition, a more customised production, and a faster development of innovation, are requiring a new breed of managers, who are specialised in managing complex systems. Each company area has its own specialists, but today's companies need also a manager with a broader view. A manager who is specialised in understanding and managing the interactions among the different parts of a company, so as to make them work together well.

Thanks to such a broad view, and to the understanding of the dynamics of a company, Industrial Managers are sought after also by consulting companies, because they need to quickly, effectively, and efficiently intervene in improving their customers' performances. Last but not the least, today's turbulent environment leads companies to look for professionals that are flexible to address problems and improvements in different functional areas.



What companies say about IMIM?

"The International Master in Industrial Management gives the unique opportunity to get acquainted with the social, cultural and economic life of different European countries, while learning leading edge approaches and methodologies, developed by three of the leading Universities in Europe."

Jeremy Weinstein

*Operations and Supply Chain Vice President
Whirlpool Europe*

COMPANY-BASED MASTER THESIS

Example of Companies where MT was performed

- > ABB
- > Accenture
- > Arbikie Highland Estate
- > Arcelor Mittal
- > Automotive Lighting Italia S.p.A.
- > Bombardier
- > Cisco Systems
- > CONAI - Consorzio Nazionale Imballaggi
- > Decathlon France
- > EFMD
- > Ernst&Young Consulting
- > Garuda Indonesia
- > GIS International
- > Henkel AG & Co. KGaA
- > Infineon Technologies
- > Italcementi
- > Lamborghini
- > Materialise
- > Medtronic Italia S.p.A
- > ONU
- > Sony
- > The Lean Six Sigma Company
- > UPS
- > VivaSanté
- > Whirlpool

CAREER OPPORTUNITIES

Universities organise recruitment days and seminars on campus for our candidates.

A Career Day is also organised each year, inviting a big number of companies for oncampus recruitment.

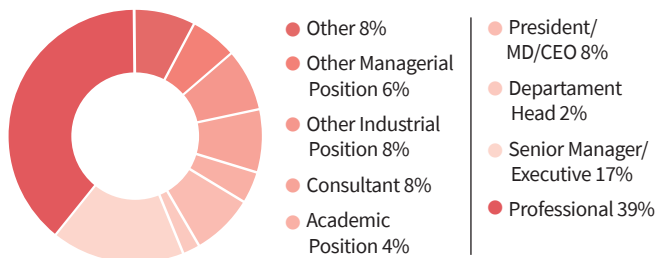
TOP INDUSTRY SECTORS

- > Aviation
- > Automotive
- > Manufacturing
- > Energy
- > Information Technology
- > Consulting
- > FMCG

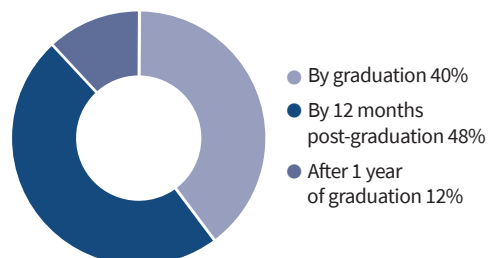
SOME OF THE TOP EMPLOYERS

- | | |
|----------------------------|----------------------|
| > ACCENTURE | > HEIDELBERG CEMENT |
| > ABB | > HP |
| > ARCELOR MITTAL | > JPMORGAN |
| > AIRBUS | > KOSTAL KTF |
| > BOSTON CONSULTING GROUP | > L'OREAL |
| > BOMBARDIER | > LAMBORGHINI |
| > CAPGEMINI | > METAL C |
| > CISCO SYSTEMS | > NESTLE |
| > CITIBANK | > NORFOLKLINE |
| > CONTINENTAL CORP. | > PHILIPS HEALTHCARE |
| > SC JOHNSON | > SUBSEA7 |
| > DELOITTE CONSULTING LLP | > SONY |
| > ERNST & YOUNG | > TELEFÓNICA |
| > GENERAL ELECTRICON | > UPS |
| > HILTI AG | > VOLVO |
| > HOLCIM GROUP SUPPORT LTD | > WHIRPOOL |
| > HENKEL | > WIPRO TECHNOLOGIES |

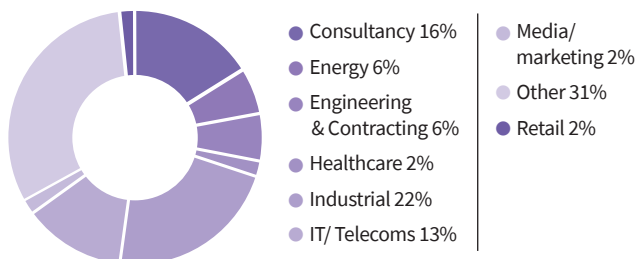
JOB TITLE



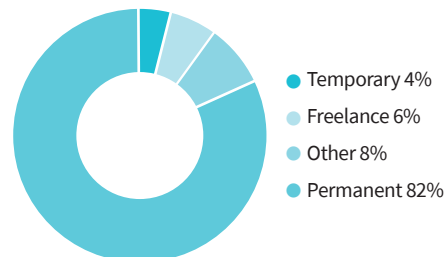
PLACEMENT STATISTICS



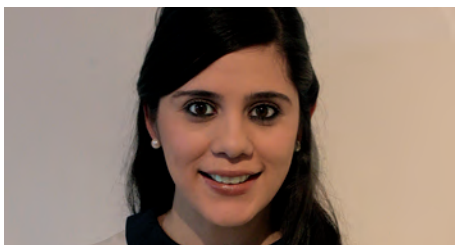
TYPE OF INDUSTRY



TYPE OF CONTRACT



ALUMNI TESTIMONIALS



María Fernanda

Venezuela

2010-2012 IMIM edition

IMIM has been an amazing opportunity for merging academic knowledge, with work experience and International exposure. It is an academically challenging program, professionally significant, and socially fulfilling. It combines management vision with the challenges and new methodologies emerging in modern manufacturing and service industries piloted by teachers with high expertise in their field and top level education. IMIM has been an opportunity to learn from diversity, to embrace change and new ways of thinking, sharing with highly talented motivated classmates in a multi-cultural environment. It's a platform, a catalyst to apply for positions of greater responsibility in an International Business Environment and essentially, a Network of Future Managers.



Miloš Jovanović

Serbia

2008-2010 IMIM edition

IMIM provides unforgettable life experience in a multi-cultural environment at leading European universities. Studying and living in minimally three different European countries, with colleagues from all over the World definitely makes you a highly adaptable person to any working and living environment. Studying with competent colleagues with different cultural background prepares you in a best way for international market and global companies. Great advantage of the master programme is the provided possibility to finish master thesis in an industrial setting, enabling you in a best way for a quick start of a working carrier. Joining this programme was definitely one of the best decisions, and having friends all over the World is the most beautiful result of this challenging international journey.

ADMISSIONS

COURSE START AND APPLICATION DEADLINE

Intake: September

Duration: 16 months + Master Thesis

ADMISSION REQUIREMENTS

- > Curriculum vitae (Europass CV Format)
- > Bachelor degree or recognized equivalent from an accredited institution (minimum 3 years full time study) in a scientific or technical discipline (e.g. candidates with a background in Economics are not eligible)
- > High proficiency in the English language (current*)
- > Recent GMAT or GRE scores (optional)
- > Recommendation Letter
- > Motivation Letter
- > Digital Picture

TUITION FEE & SCHOLARSHIPS

GENERAL TUITION FEE

€ 18.500

- > Fee includes tuition, examination and administrative services provided by each academic institution.
- > Travel, insurance and accommodation expenses are excluded from the fee

IMIM TUITION FEE WAIVERS

- > Available partial discounts covering up to EUR 6.000

IMIM SCHOLARSHIPS

- > Merit-based scholarships awarded



Admission contacts:

UPM ETS Ingenieros Industriales
OFFICE

C/José Gutiérrez Abascal, 2
28006 Madrid, Spain

Susana Moreno: imim@etsii.upm.es

Leticia Díez: ldiez@etsii.upm.es

Tl. +34 9106 77070/71

